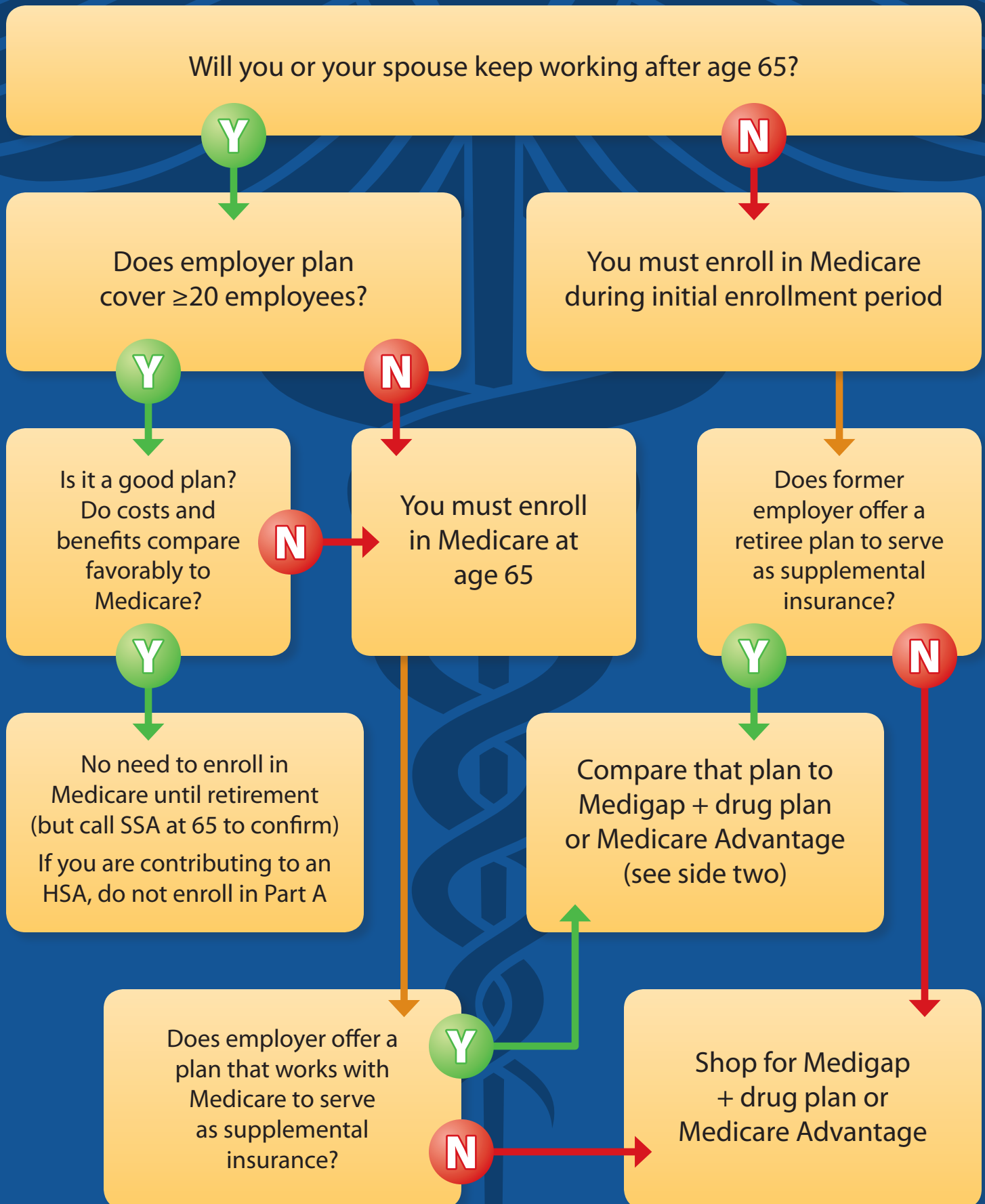


Medicare Enrollment Planning



Steps to take when comparing Medicare to 20+ employer insurance

STEP 1: Talk to your employer to see if your current insurance will change at age 65.

STEP 2: Gather all documents pertaining to your employer-sponsored insurance.

STEP 3: Find a comparable Medicare plan—either traditional Medicare A, B, D plus Medigap, or a Medicare Advantage plan.

STEP 4: Figure out which plan is a better value by comparing prices and benefits.

STEP 5: Consider other factors, such as spousal insurance, whether you'd have to change your doctors, etc.

STEP 6: Get a second opinion from a trusted insurance agent or consultant.

Considerations

- Can you see the doctor you want? Are the right specialists available if you need them?
- How much will you have to pay for your medications?
- What are the monthly premiums?
- What other out-of-pocket costs might you incur based on your expected health care usage?
- Are family benefits important? If the decision to go off the employer plan would affect your spouse's insurance, add the cost of spouse's coverage to your analysis.

To enroll in Medicare, visit ssa.gov/benefits/medicare or call (800) 772-1213

Eric Blake, CFP®
Founder and Lead Financial Planner
Blake Wealth Management

201 W Virginia Street
Suite 102
McKinney, TX 75069

19724267237

eric@blakewealthmanagement.com
www.blakewealthmanagement.com



Information here is provided, in part, by third-party sources. These sources are generally deemed to be reliable; however, neither Blake Wealth Management, nor RFG Advisory guarantee the accuracy of third-party sources. The views expressed here are those of Blake Wealth Management. They do not necessarily represent those of RFG Advisory, their employees, or their clients.

Advisory services offered by Investment Advisory Representatives of RFG Advisory, LLC ("RFG Advisory" or "RFG") a registered investment advisor. Blake Wealth Management, and RFG Advisory are unaffiliated entities. Advisory services are only offered to clients or prospective clients where RFG Advisory and its representatives are properly licensed or exempt from licensure. No advisory services may be rendered by RFG Advisory unless a client agreement is in place. RFG Advisory is an SEC-registered investment adviser. SEC registration does not constitute an endorsement of RFG by the Commission, nor does it indicate that RFG or any associated investment advisory representative has attained a particular level of skill or ability.