

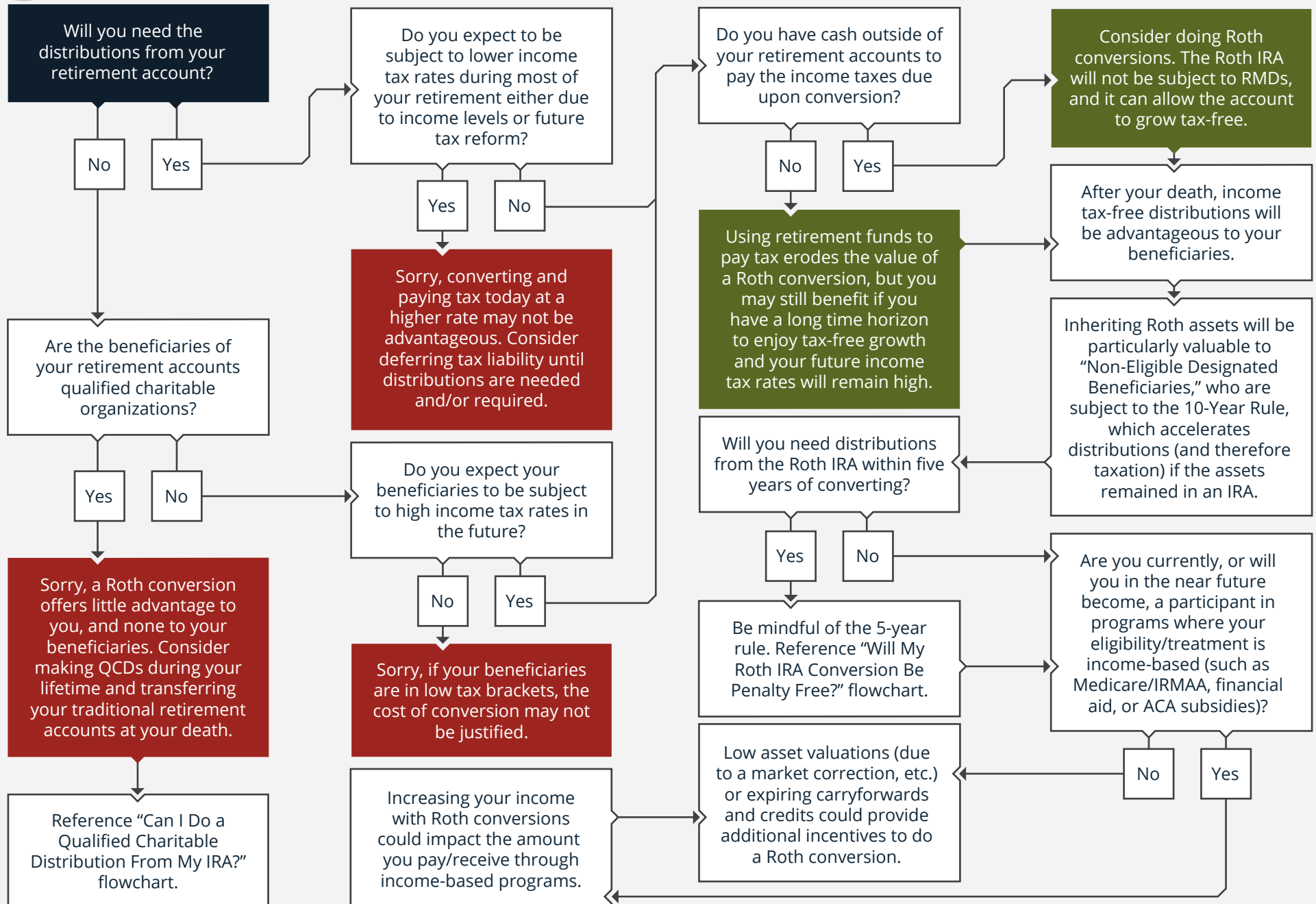
# 2020 · SHOULD I CONSIDER DOING A ROTH CONVERSION?



Personalized Planning. Fiduciary Focus.



Start Here





## IMPORTANT DISCLOSURES



All information has been obtained from sources believed to be reliable, but its accuracy is not guaranteed. There is no representation or warranty as to the current accuracy, reliability or completeness of, nor liability for, decisions based on such information and it should not be relied on as such. Consult your financial or tax professional with questions.

### **MBE Wealth Management**

info@mbewealth.com | 800-729-2270 | mbewealth.com